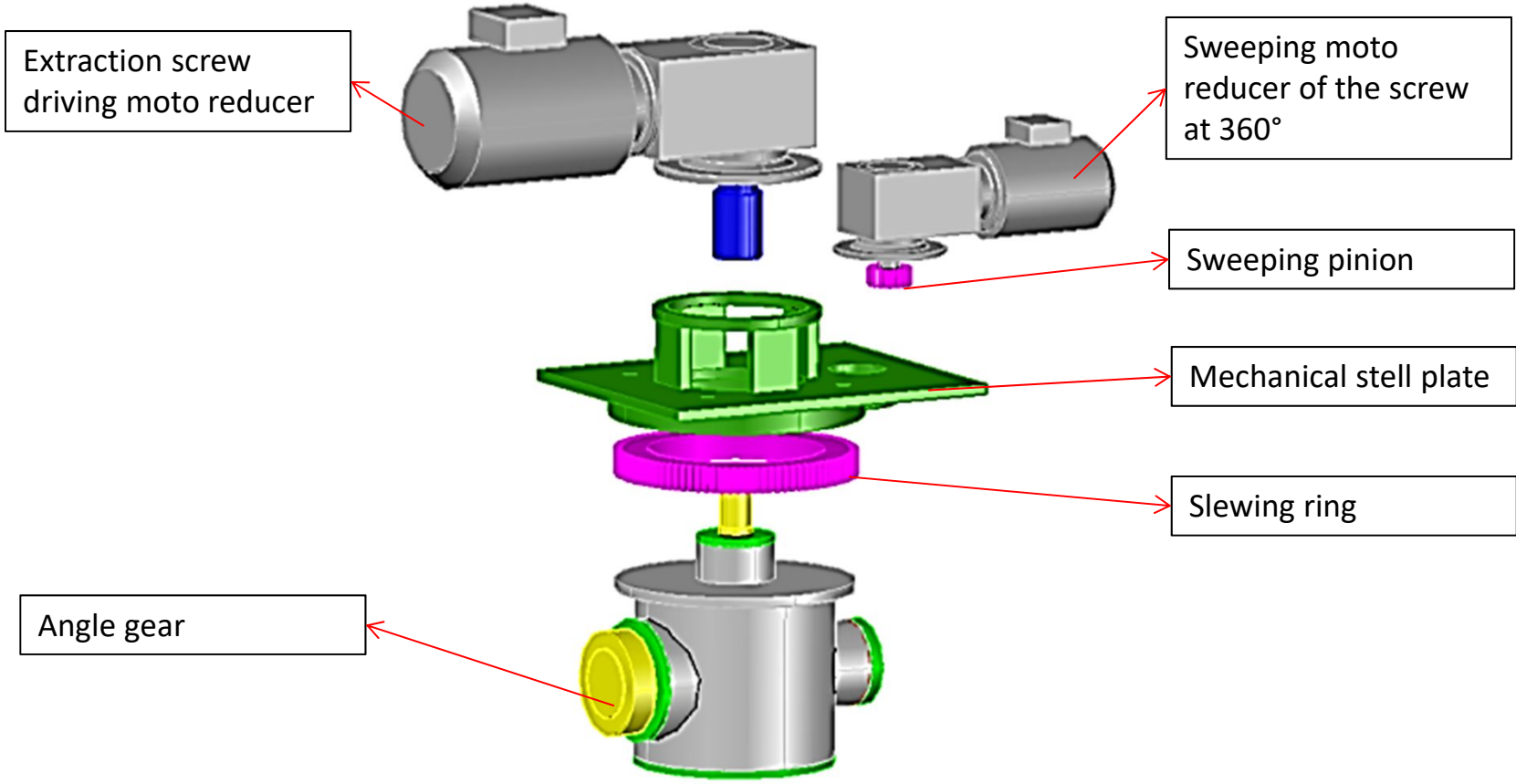




Design – Manufacturing – Repair –
Maintenance of handling screw systems for
flat bottom silos.

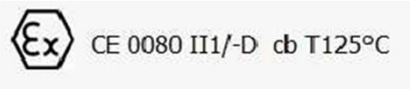


THE MODEL IXC



Option:

The angle gear can be equipped with: A permanent probe for controlling the temperature of the oil.
A system of permanent monitoring of the oil level. An equipotential bonding system for the screw and the gearbox housing.
These options confer to this model the ATEX compliance: 2014/34 / EU of February 26, 2014 with the following marking:

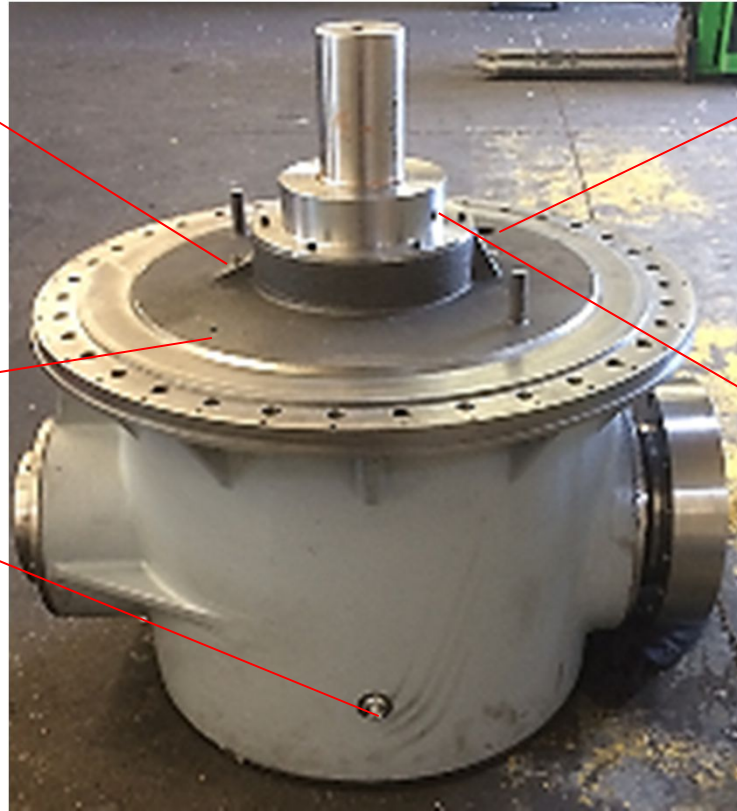


ANGLE GEAR FOR EXTRACTOR MODELS IXC

Lubricator for the bearings of the upper part of the angle gear

Breather plug

Oil level



manual gauge for checking the oil level.

Breather plug

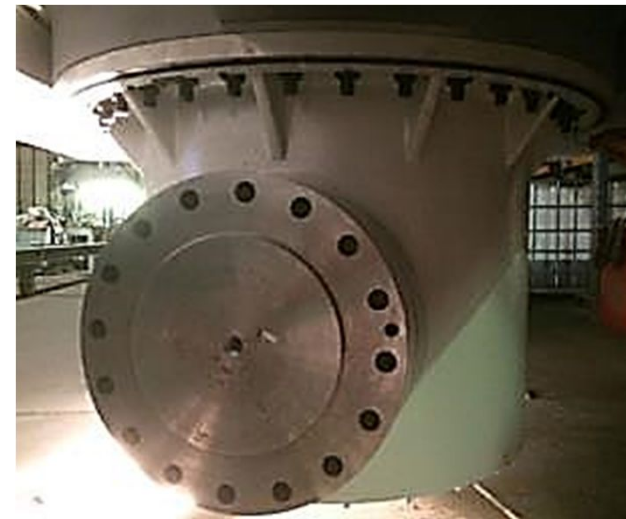
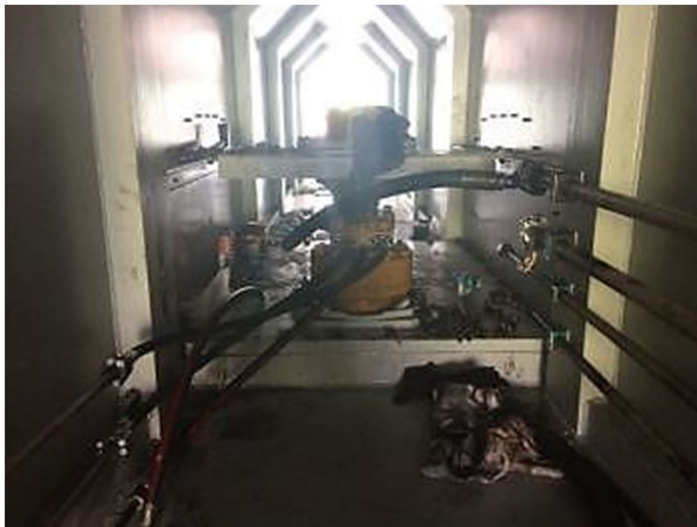
Maintenance:

Manual lubrication every 24000 hours of operation or every 3 years.

Draining the angle gear every 24000 operating hours or every 3 years (draining possible by suction)

All these operations are performed from inside the tunnel even full silo.

PICTURES



APPLICATION



Product: COAL

Silo diameter: 15,28m

Silo Height: 14,76 m

Extractor size: IXC 1-20

Output flow: 0 à 200 T/H

MOUNTING

